



## Bonita Drive

Wembdon, Bridgwater, Somerset

**£340,000**

Ref: 32787433

Bridgwater

Telephone: 01278 258005

Email: [office@josephcasson.co.uk](mailto:office@josephcasson.co.uk)

1 Friar Lawn, Bridgwater, Somerset, TA6 3LL

Taunton

Telephone: 01823 740051

Email: [taunton@josephcasson.co.uk](mailto:taunton@josephcasson.co.uk)

2 The Crescent, Taunton, Somerset, TA1 4EA

 **JOSEPH  
CASSON**  
estate agency



# Gallery



# Property Description

**Location:** Wembdon, Bridgwater, Somerset

An exceptional, three bedroom detached property ideally located in a modern development between Wembdon and Bridgwater's town centre. This stunning home was constructed in 2013 as part of Redrow's prestigious Heritage Collection, known for its high-quality craftsmanship and attention to detail.

Upon entering the property, you are greeted by a welcoming entrance hallway that sets the tone for the rest of the house. The ground floor features a convenient cloakroom, perfect for guests, and a spacious lounge where you can relax and unwind after a long day.

One of the highlights of this property is the impressive open-plan kitchen/diner, which provides ample space for entertaining friends and family. The kitchen is equipped with modern appliances and offers plenty of storage options, making it a chef's dream.

Moving upstairs, you will find three generously sized bedrooms, each offering its own unique charm. The primary bedroom boasts an en-suite shower room and fitted wardrobes, providing both comfort and practicality.

Externally, the property features a private, well-maintained garden with a seating area, ideal for enjoying the outdoors during the warmer months. Additionally, there is a garage and driveway, ensuring ample parking space for you and your guests.

**ACCOMMODATION** - This thoughtfully designed, double glazed & gas centrally heated accommodation briefly comprises: canopy porch, entrance hallway, cloakroom, well-proportioned lounge with electric fireplace and an impressive kitchen/diner with high quality 'Smeg' integrated appliances and utility/storage cupboard.

Arranged on the first floor, accessed off a spacious landing is a family bathroom and three generously sized bedrooms, the primary bedroom benefitting from integrated wardrobes and a contemporary en-suite shower room. Externally, there is a small front garden, enclosed rear garden with lawned & decked patio areas and side access, ample parking is directly to the side of the property (on own driveway) as is the garage.

**LOCATION** - Positioned with a small development on the outskirts of Wembdon, Bonita Drive is ideally situated midway between the heart of Wembdon Village and Bridgwater's Town Centre.

Within Wembdon, there is a local primary school, historic church, The Cottage public house, children's playground, garage, cricket & football pitches and The Green, a multi-purpose building; cricket pavilion, nursery & village hall.

Bridgwater offers a wide range of amenities and has excellent transport links to the M5 motorway

and mainline rail link. A short distance to the West is the Quantocks Hills, an Area of Outstanding Natural Beauty.

**Bridgwater**

**Telephone: 01278 258005**

**Email: [office@josephcasson.co.uk](mailto:office@josephcasson.co.uk)**

1 Friar Lawn, Bridgwater, Somerset, TA6 3LL

**Taunton**

**Telephone: 01823 740051**

**Email: [taunton@josephcasson.co.uk](mailto:taunton@josephcasson.co.uk)**

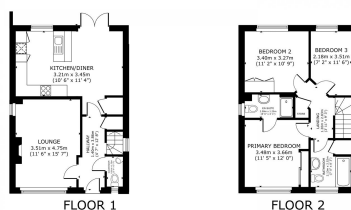
2 The Crescent, Taunton, Somerset, TA1 4EA



# Additional Info

For Sale	Beds: 3	Baths: 2
Type: House	Modern Detached Property	Constructed By Redrow Homes in 2013
Three Generously Sized Bedrooms	Primary Bedroom With Fitted Wardrobes & En-Suite Shower Room	Spacious Separate Lounge
Open-Plan Kitchen / Diner	Downstairs Cloakroom	Enclosed Rear Garden With Lawn & Decked Patio
Garage & Driveway Providing Ample Parking	Open-Plan Kitchens	

# FloorPlans



GROSS INTERNAL AREA  
FLOOR 1 51.2 m<sup>2</sup> (551 sq.ft.) FLOOR 2 48.1 m<sup>2</sup> (518 sq.ft.)  
EXCLUDED AREAS : REAR GARDEN 105.3 m<sup>2</sup> (1,132 sq.ft.) GARAGE 25.6 m<sup>2</sup> (276 sq.ft.)  
TOTAL : 185.6 m<sup>2</sup> (2,009 sq.ft.)  
SIZES AND DIMENSIONS ARE APPROXIMATE, ACTUAL MAY VARY.