

Moravia Close

Bridgwater, Somerset

£375,000

Ref: 32787436

Bridgwater

Telephone: 01278 258005

Email: office@josephcasson.co.uk

1 Friar Lawn, Bridgwater, Somerset, TA6 3LL

Taunton

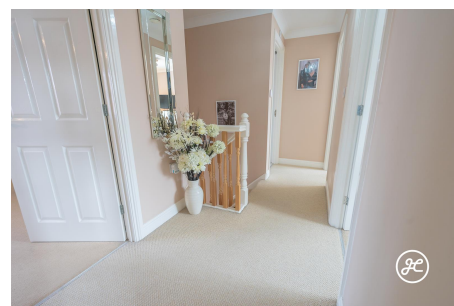
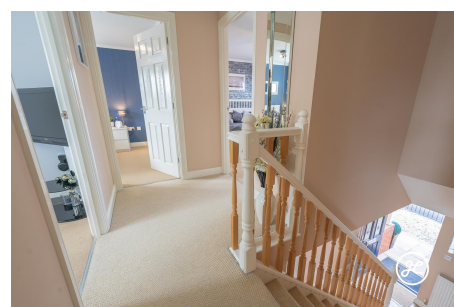
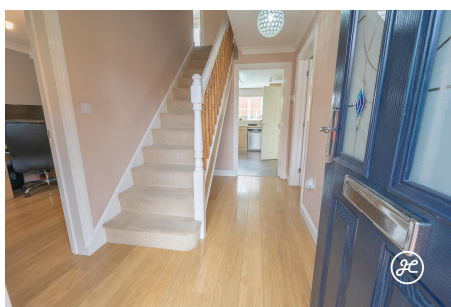
Telephone: 01823 740051

Email: taunton@josephcasson.co.uk

2 The Crescent, Taunton, Somerset, TA1 4EA

 **JOSEPH
CASSON**
estate agency

Gallery



Property Description

Location: Bridgwater, Somerset

UNEXPECTEDLY RE-AVAILABLE 19/03/24 - A superb, executive detached property within a cul-de-sac location, offering four bedrooms (en-suite shower room) and three independent reception rooms, DOUBLE GARAGE and double width driveway.

This detached property is conveniently positioned with excellent transport links and many local amenities including: Wembdon Primary School, Chilton Trinity Secondary School, 1610 Sports Centre, Wembdon park/sports ground and The Green a multi-purpose building; cricket pavilion, nursery & village hall.

ACCOMMODATION - This UPVC double glazed, gas centrally heated accommodation briefly comprises:- Entrance porch, hallway, study, lounge, dining room, kitchen, utility room and cloakroom to the ground floor.- Arranged on the first floor and accessed off the spacious landing are four bedrooms (the primary bedroom with en-suite shower room) and a family bathroom.- Externally, there is front garden enclosed with metal railings and an enclosed, low maintenance rear garden with multiple seatings areas and raised flower & shrub beds.- Directly to the side is a double garage and parking on own double width driveway for two vehicles.

LOCATION - This sought-after development is accessed off Western Way (NDR) and is very popular with families.- It is ideally situated for access to both Bridgwater Town Centre and the M5.- Chilton Trinity Secondary School & 1610 Sports Centre is a short distance away as are a number of other local amenities.- Bridgwater Town Centre offers a wide range of amenities and has excellent transport links to the M5 motorway and mainline rail link. A short distance to the West is the Quantock Hills, an Area of Outstanding Natural Beauty.

Additional Info

For Sale	Beds: 4	Baths: 2
Type: House	Floor Area : 1453 sqft	Executive Detached Family Home
Four Bedrooms	Including Spacious Primary Bedroom with En-Suite Shower Room & Fitted Wardrobes	Three Reception Rooms
Fitted Kitchen	Downstairs Cloakroom & Utility Room	Enclosed Rear Garden
Double Garage & Driveway		

FloorPlans

