

## Carver Close

Wembdon, Bridgwater, Somerset

# £450,000

Ref: 32787444

Bridgwater

Telephone: 01278 258005

Email: [office@josephcasson.co.uk](mailto:office@josephcasson.co.uk)

1 Friar Lawn, Bridgwater, Somerset, TA6 3LL

Taunton

Telephone: 01823 740051

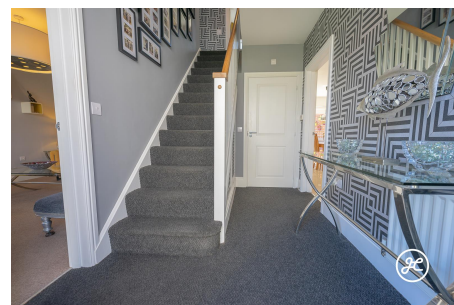
Email: [taunton@josephcasson.co.uk](mailto:taunton@josephcasson.co.uk)

2 The Crescent, Taunton, Somerset, TA1 4EA

 **JOSEPH  
CASSON**  
estate agency



# Gallery



# Property Description

**Location:** Wembdon, Bridgwater, Somerset

Nestled within the sought-after Redrow Homes development, this remarkable four-bedroom detached property awaits you. Positioned just off Wembdon Road, it enjoys a prime location, conveniently close to both Wembdon village and Bridgwater town centres.

Prepare to be captivated by the luxurious kitchen/dining/living room, a true masterpiece. Indulge in the separate sitting room, offering a cozy retreat for relaxation. The generously sized garden beckons you to embrace the outdoors, while the convenience of a garage and driveway adds a touch of practicality.

With energy efficiency at its core, this property boasts an impressive EPC rating of B. Don't miss out on the opportunity to make this exceptional home yours.

**ACCOMMODATION** - This thoughtfully designed, double glazed & gas centrally heated accommodation briefly comprises: entrance hallway, cloakroom, well-proportioned lounge and an impressive open-plan kitchen/dining/family room with high quality integrated appliances, and a utility room.

Arranged on the first floor, accessed off a spacious landing is a family bathroom and four generously sized bedrooms, the primary bedroom benefitting from integrated wardrobes and a contemporary en-suite shower room.

Externally, the property is surrounded by established shrubs & flowers, the enclosed rear garden offers an excellent degree of privacy and is predominantly laid to lawn with paved patio and raised decking seating areas, and shrub & flower borders, side access to driveway & garage. Parking is on own driveway in front of the single garage and there is an additional area of hardstanding directly to the side.

**LOCATION** - Positioned with a small development on the outskirts of Wembdon, directly accessed from Wembdon Road. Carver Close is ideally situated midway between the heart of Wembdon Village and Bridgwater's Town Centre.

Within Wembdon, there is a local primary school, village shop (& post office), the historic St. George's Church, The Cottage public house, children's playground, garage, cricket & football pitches and The Green, a multi-purpose building; cricket pavilion, nursery & village hall.

Bridgwater offers a wide range of amenities and has excellent transport links to the M5 motorway

and mainline rail link. A short distance to the West is the Quantocks Hills, an Area of Outstanding Natural Beauty.

**Bridgwater**

**Telephone: 01278 258005**

**Email: [office@josephcasson.co.uk](mailto:office@josephcasson.co.uk)**

1 Friar Lawn, Bridgwater, Somerset, TA6 3LL

**Taunton**

**Telephone: 01823 740051**

**Email: [taunton@josephcasson.co.uk](mailto:taunton@josephcasson.co.uk)**

2 The Crescent, Taunton, Somerset, TA1 4EA



# Additional Info

For Sale	Beds: 4	Baths: 2
Type: House	Floor Area : 1550 sqft	Modern Detached Property
Constructed By Redrow Homes in 2013	Impressive First Floor Landing	Four Generously Sized Bedrooms
Primary Bedroom With Fitted Wardrobes & En-Suite Shower Room	Separate Lounge	Open-Plan Kitchen/Dining/Living Room
Downstairs Cloakroom & Utility Room	Enclosed Rear Garden With Seating & Lawned Areas	Garage & Driveway
Open-Plan Kitchens		

# FloorPlans



GROSS INTERNAL AREA  
FLOOR 1: 794 sq ft, 73.01 m<sup>2</sup>, FLOOR 2: 808 sq ft, 74.31 m<sup>2</sup>  
TOTAL: 1599 sq ft, 146.32 m<sup>2</sup>  
SIZES AND DIMENSIONS ARE APPROXIMATE, ACTUAL MAY VARY