



Holman Clavel Road

Otterford, Chard, Somerset

£550,000

Ref: 32788333

Bridgwater

Telephone: 01278 258005

Email: office@josephcasson.co.uk

1 Friar Lawn, Bridgwater, Somerset, TA6 3LL

Taunton

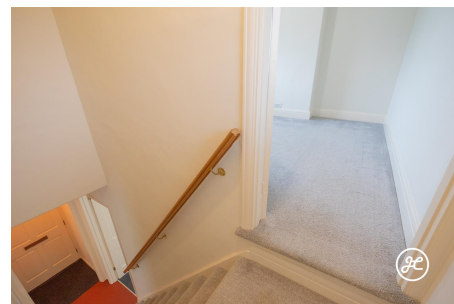
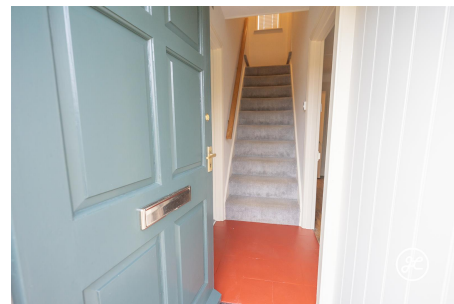
Telephone: 01823 740051

Email: taunton@josephcasson.co.uk

2 The Crescent, Taunton, Somerset, TA1 4EA

 **JOSEPH
CASSON**
estate agency

Gallery



Property Description

Location: Otterford, Chard, Somerset

Tucked away in the breathtaking Blackdown Hills, a designated Area of Outstanding Natural Beauty, lies this delightful detached cottage. Nestled within a generous 1-acre plot, this property provides the ultimate rural retreat while still being conveniently close to local amenities in nearby villages and the bustling county town of Taunton just a short drive away. And the best part? There's no onward chain, so you can move in and start enjoying the serenity of country living right away. Don't let this rare opportunity slip through your fingers - seize the day and make this charming cottage your forever home!

ACCOMMODATION - Positioned within an idyllic setting, this detached accommodation briefly comprises: an entrance hallway, two reception rooms, pantry, kitchen, utility room, bathroom, and rear lobby to the ground floor. On the first floor are two double bedrooms. Externally, the property is set within lawned gardens measuring just over 1 acre with established trees, shrubs, a well, and outbuildings including a garage. There is a gated driveway providing parking for multiple vehicles.

LOCATION - Hazeldene is conveniently located in the scenic Blackdown Hills, a designated Area of Outstanding Natural Beauty. It is positioned just off the main road connecting Honiton and Taunton, on the way to Wellington. The property offers easy access to the nearby villages of Churchinford and Bishopswood, which are only two miles away and provide a range of local amenities such as a village store, village hall, pubs, restaurants, and various clubs and associations. For medical needs, residents can rely on the Blackdown Practice doctors' surgery in Churchinford, which is just two miles away and maintains connections with the Hemyock and Dunkerswell Practices. Hazeldene benefits from essential services including mains electricity and water, private drainage, and oil-fired central heating.

Additional Info

For Sale	Beds: 2	Baths: 1
Type: House	Land Size : 1 sq ft	Floor Area : 868 sqft
Attractive Double-Fronted Property	Set Within A One Acre Plot	Two Double Bedrooms
Two Reception Rooms	Kitchen	Utility Room & Pantry
Oil Central Heating & Double Glazing	Large Enclosed Lawned Garden	Views of Surrounding Countryside
Private Drainage	Outbuildings including Garage	Country Living
Beautiful Gardens		

FloorPlans

