



Campion Way

Bridgwater

£210,000

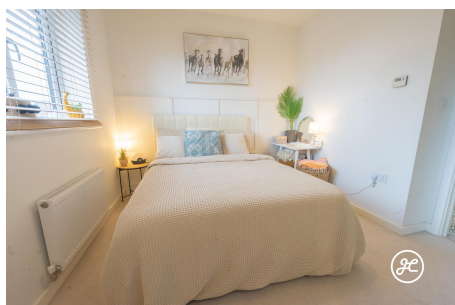
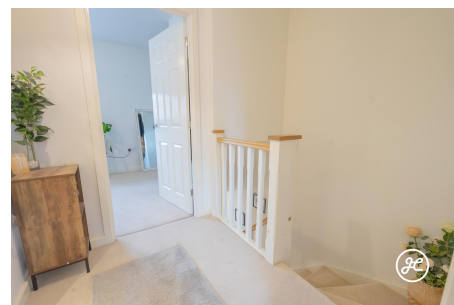
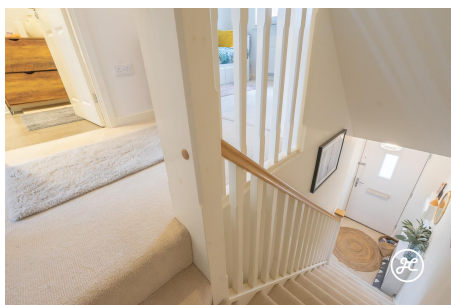
Ref: 32920766

Bridgwater
Telephone: 01278 258005
Email: office@josephcasson.co.uk
1 Friarn Lawn, Bridgwater, Somerset, TA6 3LL

Taunton
Telephone: 01823 740051
Email: taunton@josephcasson.co.uk
2 The Crescent, Taunton, Somerset, TA1 4EA



Gallery



Property Description

Location: Bridgwater

Welcome to this delightful two-bedroom semi-detached property in the highly sought-after Wilstock Village development. Constructed by Bloor Homes in 2019, this home showcases a sleek and modern design, boasting a B energy rating for added efficiency.

This property offers convenient access to major transport links like the M5, Taunton, and Bridgwater, making it an ideal choice for young couples and first-time buyers. The spacious kitchen/dining area, complete with French doors leading to the garden, is perfect for entertaining guests. The ground floor also features a utility room, cloakroom, storage cupboard, and a generously sized living room.

Designed with a focus on maximizing space, this home embodies contemporary open-plan living. Both double bedrooms offer ample space for relaxation. Outside, parking is available to the front of the property.

ACCOMMODATION - This double glazed, gas centrally heated accommodation briefly comprises: entrance hallway, lounge, kitchen/diner, cloakroom and utility area to the ground floor. Accessed via a quarter-turning staircase and a spacious first floor landing, are two double bedrooms (the primary bedroom with en-suite shower room) and a family bathroom.

Externally, the rear garden is enclosed and is predominantly lawned with a patio area, side access. To the front aspect is two parking spaces.

A grounds maintenance charge is due to be set up by the developers with the cost being £150 per annum.

LOCATION - Wilstock Village is a stunning new development of family homes situated at the foot of Quantock Hills that has retained an area of nearby nature walks with excellent transport links to the M5 and A38, and on the edge of the town of North Petherton.

North Petherton offers a range of shops and facilities with the bustling town of Bridgwater just a mile away which is home to an abundance of amenities comprising of a varied mix of local individual shops alongside high street stores.

Additional Info

For Sale	Beds: 2	Baths: 2
Type: House		

FloorPlans

