



# Potters Way

Cannington

**£399,500**

Ref: 32952948

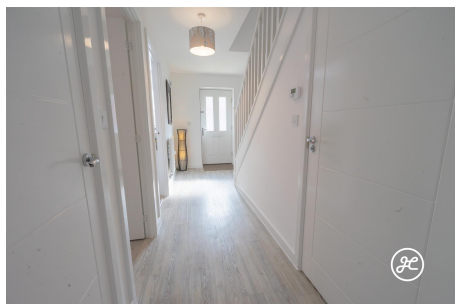
Bridgwater  
Telephone: 01278 258005  
Email: [office@josephcasson.co.uk](mailto:office@josephcasson.co.uk)  
1 Friarn Lawn, Bridgwater, Somerset, TA6 3LL

Taunton  
Telephone: 01823 740051  
Email: [taunton@josephcasson.co.uk](mailto:taunton@josephcasson.co.uk)  
2 The Crescent, Taunton, Somerset, TA1 4EA





# Gallery



# Property Description

## **Location:** Cannington

Nestled in the charming Grange Meadows community on the edge of Cannington, you'll find this modern five-bedroom home built in 2023 by Crest Nicholson.

The spacious layout of the Whixley design offers versatility and comfort, with four double bedrooms, one single bedroom, and a stylish en-suite and wardrobe in the primary bedroom. The open-plan kitchen, dining, and family area is perfect for entertaining guests, while the separate living room boasts a beautiful bay window.

Additional highlights include a study, garage, driveway, and a lovely enclosed rear garden with a well-maintained front lawn.

**ACCOMMODATION** - The layout includes an entrance hallway, lounge, study, open-plan kitchen/dining/family room, utility room, and cloakroom on the ground floor. Upstairs, you'll find a spacious landing, five bedrooms, an en-suite shower room, and a family bathroom.

Outside, there's a lawned front garden, parking on your own driveway, a garage, and an enclosed rear garden with a lawn and seating area.

There is an annual service charge of £250 for the development.

**LOCATION** - The village of Cannington, on the edge of the Quantock Hills Area of Outstanding Natural Beauty, can trace its past as a popular settlement back as far as 1500 years. Today the thriving village supports a number of independent shops as well as pubs, restaurants, cafes and primary school and is ideally positioned for access to Bridgwater, Taunton and Hinkley Point.-

The market town of Bridgwater is approximately 3 miles away and offers further amenities and has excellent transport links to the M5 motorway and mainline rail link.

# Additional Info

For Sale	Beds: 5	Baths: 2
Type: House	Floor Area : 1367 sqft	Nearly New Detached Property
Constructed in 2023 by Crest Nicholson	Five Bedrooms	Two Bathrooms
Two Reception Rooms	Open-Plan Kitchen/Dining/Living Room	Utility Room & Cloakroom
Enclosed Rear Garden	Garage & Driveway	EPC RATING: B
Open-Plan Kitchens		

# FloorPlans

